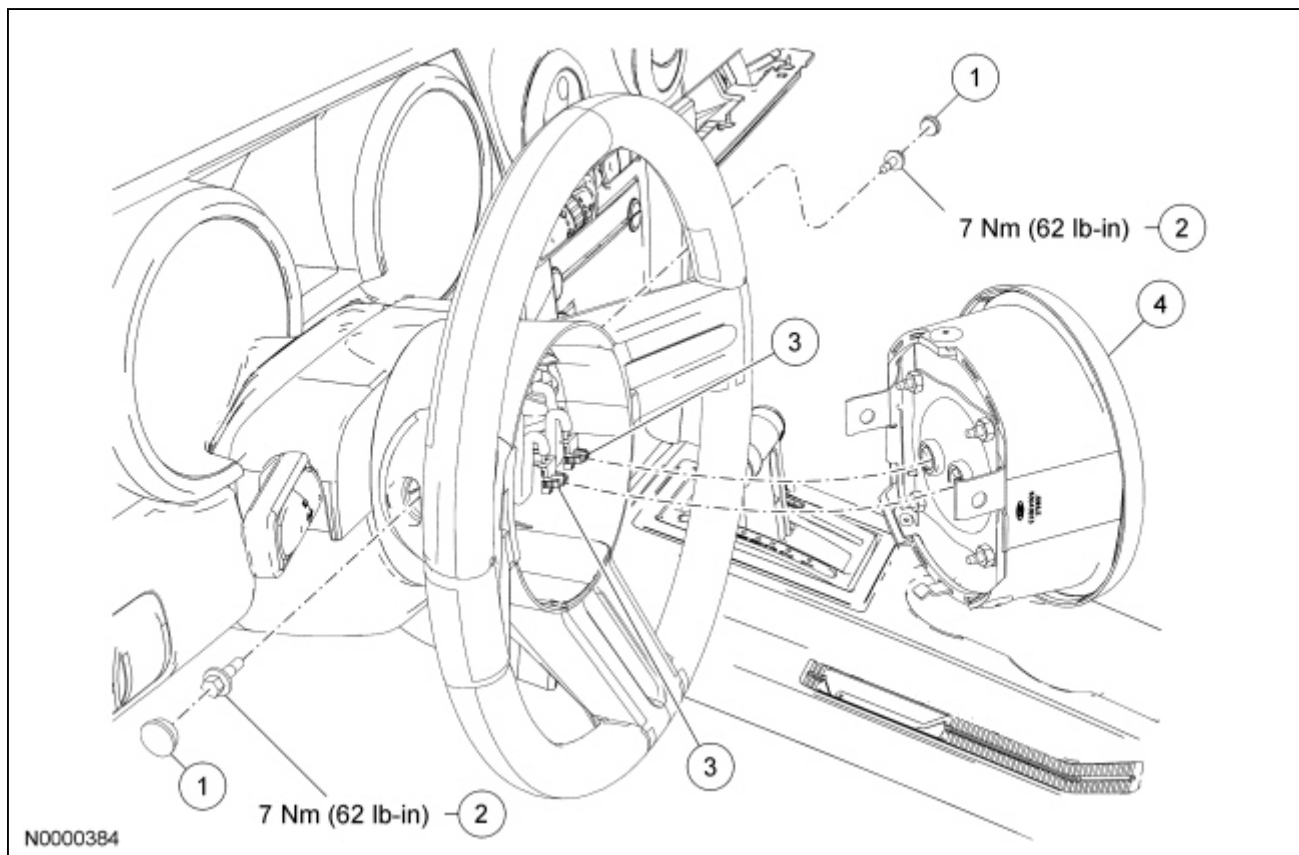


Driver Air Bag Module



Item	Part Number	Description
1	3L518	Driver air bag module bolt caps (2 required)
2	W506411	Driver air bag module bolts (2 required)
3	—	Driver air bag module electrical connectors (part of 14A664)
4	043B13	Driver air bag module

Removal

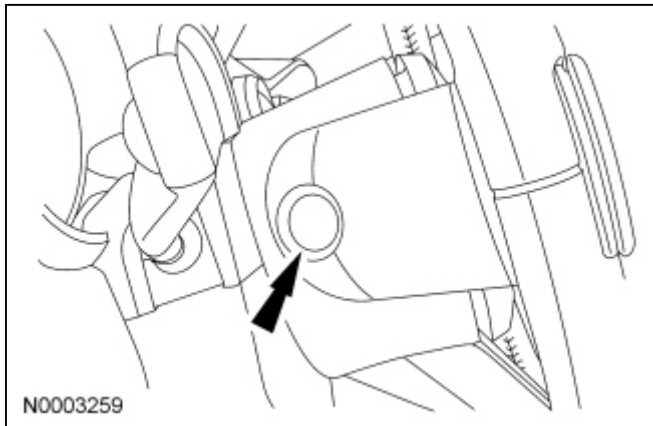
WARNING: Always carry or place a live air bag module with the air bag and deployment door/trim cover/tear seam pointed away from the body. Do not set a live air bag module down with the deployment door/trim cover/tear seam face down. Failure to follow these instructions may result in serious personal injury in the event of an accidental deployment.

WARNING: Never probe the electrical connectors on air bag, Safety Canopy® or side air curtain modules. Failure to follow this instruction may result in the accidental deployment of these modules, which increases the risk of serious personal injury or death.

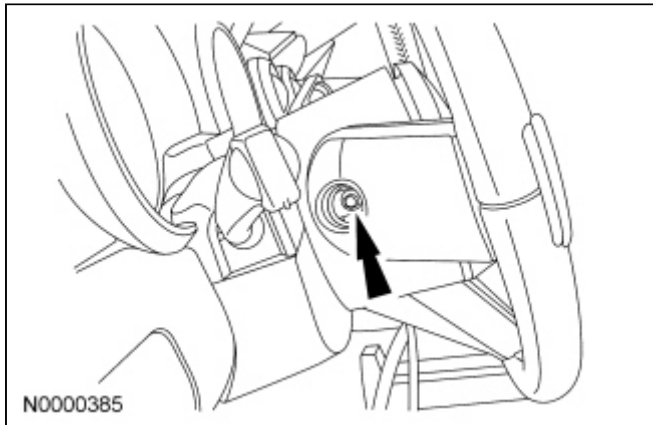
NOTE: The air bag warning indicator illuminates when the correct Restraints Control Module (RCM) fuse is removed and the ignition is ON.

NOTE: The Supplemental Restraint System (SRS) must be fully operational and free of faults before releasing the vehicle to the customer.

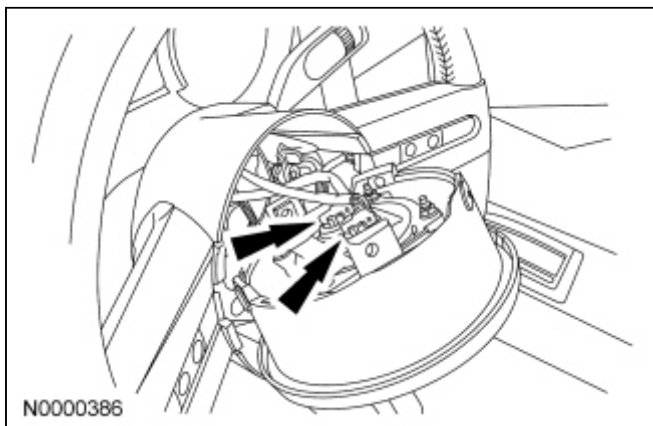
1. Depower the [SRS](#). For additional information, refer to [Supplemental Restraint System \(SRS\) Depowering and Repowering](#) in the General Procedures portion of this section.
2. Remove the 2 driver air bag module bolt caps.



3. Remove the 2 driver air bag module bolts.
 - To install, tighten to 7 Nm (62 lb-in).



4. Disconnect the 2 driver air bag module electrical connectors and remove the driver air bag module.



5. To install, reverse the removal procedure.
 6. Repower the [SRS](#). For additional information, refer to [Supplemental Restraint System \(SRS\) Depowering and Repowering](#) in the General Procedures portion of this section.
-

